

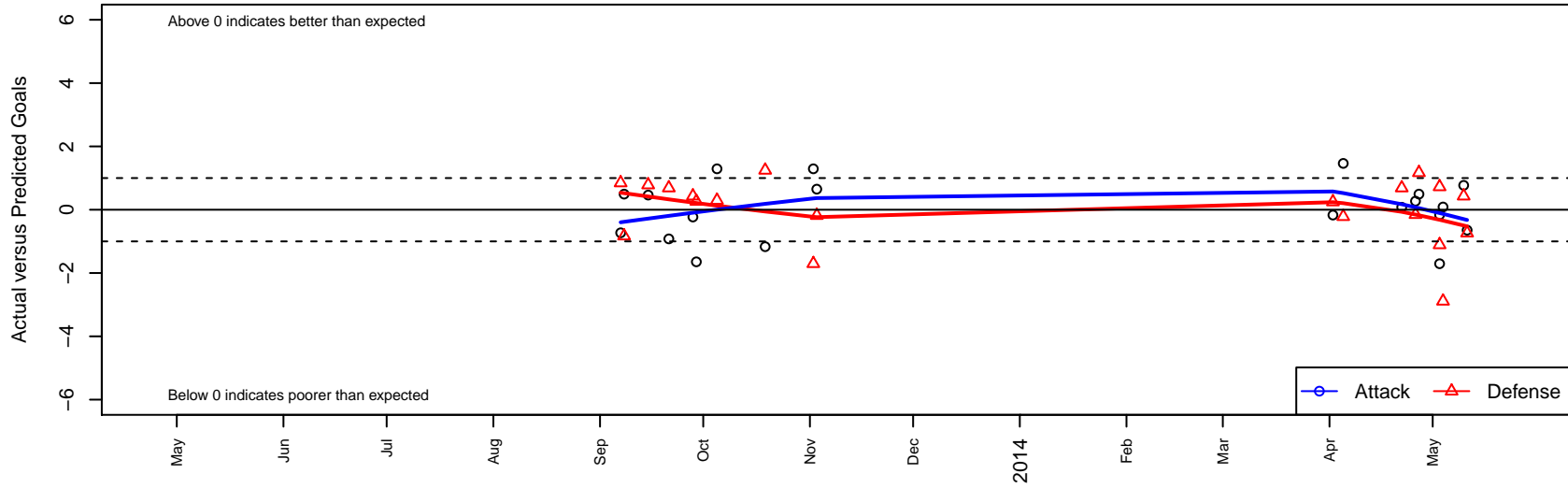
Texas Rush ECNL G99

, TX
 G99 total strength=1573
 attack=19.61 defense=10.85
 alt names used:
 Texas Rush ECNL U14

Venues played:
 ECNL U14



Texas Rush ECNL G99
 Dots are actual minus expected GF (blue circles) and GA (red triangles).
 Blue line is smoothed change in attack strength. Red is smoothed change in defense strength.



	date	home		away		venue	pred.home	pred.away
17036	2014-05-11	Texas Rush ECNL G99	1	Dallas Sting ECNL G99	2	ECNL U14	1.65	1.26
17012	2014-05-10	Texas Rush ECNL G99	2	D'Feeters SC ECNL G99	2	ECNL U14	1.23	2.43
16979	2014-05-04	Colorado Storm ECNL G99	5	Texas Rush ECNL G99	1	ECNL U14	2.11	0.91
16925	2014-05-03	SLSG ECNL G99	2	Texas Rush ECNL G99	1	ECNL U14	0.89	1.16
16952	2014-05-03	Texas Rush ECNL G99	0	SLSG-Metro ECNL G99	1	ECNL U14	1.71	1.72
16885	2014-04-27	Solar Chelsea SC ECNL G99	1	Texas Rush ECNL G99	1	ECNL U14	2.17	0.51
16835	2014-04-26	Dallas Texans ECNL G99	2	Texas Rush ECNL G99	1	ECNL U14	1.85	0.73
16799	2014-04-22	Challenger SC ECNL G99	0	Texas Rush ECNL G99	2	ECNL U14	0.69	1.92
16565	2014-04-05	Texas Rush ECNL G99	2	Lonestar SC ECNL G99	2	ECNL U14	0.54	1.78
16530	2014-04-02	AHFC ENCL G99	1	Texas Rush ECNL G99	1	ECNL U14	1.25	1.17
15139	2013-11-03	Texas Rush ECNL G99	3	TSC Hurricane ECNL G99	1	ECNL U14	2.35	0.82
15022	2013-11-02	Texas Rush ECNL G99	3	FC Dallas ECNL G99	4	ECNL U14	1.71	2.30
14644	2013-10-19	Texas Rush ECNL G99	0	AHFC ENCL G99	0	ECNL U14	1.17	1.25
14223	2013-10-05	FC Dallas ECNL G99	2	Texas Rush ECNL G99	3	ECNL U14	2.30	1.71
14145	2013-09-29	Dallas Sting ECNL G99	1	Texas Rush ECNL G99	0	ECNL U14	1.26	1.65
14012	2013-09-28	D'Feeters SC ECNL G99	2	Texas Rush ECNL G99	1	ECNL U14	2.43	1.23
13783	2013-09-21	Texas Rush ECNL G99	1	Challenger SC ECNL G99	0	ECNL U14	1.92	0.69
13687	2013-09-15	Lonestar SC ECNL G99	1	Texas Rush ECNL G99	1	ECNL U14	1.78	0.54
13480	2013-09-08	Texas Rush ECNL G99	1	Solar Chelsea SC ECNL G99	3	ECNL U14	0.51	2.17
13346	2013-09-07	Texas Rush ECNL G99	0	Dallas Texans ECNL G99	1	ECNL U14	0.73	1.85